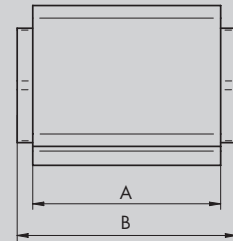
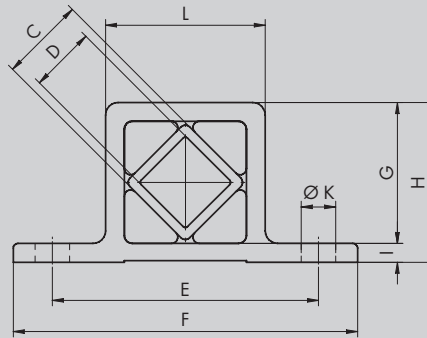
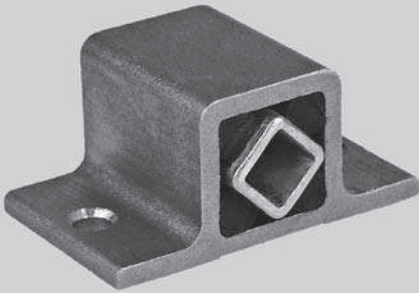


Gummifederelement Typ LTS-B

Rubber Suspension Unit Type LTS-B



Typ Type	Art. Nr. Art. no	A	B	C	D	E	F	G	H	I	ØK	L	Drehm. M in NM bei 32° Torque M in NM at 32°
LTS-B 3-40	561 430 40	40	45	15	11	50	65	26	30	4	7	30	13
LTS-B 4-50	561 440 50	50	55	18	12	65	85	32	36	4.5	9	36	34
LTS-B 5-40	561 450 40	40	45	27	22	85	110	45	50	5	11	50	56
LTS-B 5-60	561 450 60	60	65	27	22	85	110	45	50	5	11	50	85
LTS-B 5-100	561 451 00	100	105	27	22	85	110	45	50	5	11	50	140
LTS-B 6-60	561 460 60	60	65	38	30	100	125	61	66	6	13	66	160
LTS-B 6-80	561 460 80	80	85	38	30	100	125	61	66	6	13	66	215
LTS-B 6-120	561 461 20	120	130	38	30	100	125	61	66	6	13	66	320
LTS-B 7-80	561 470 80	80	85	45	35	115	145	69	78	8	13	78	310
LTS-B 7-100	561 471 00	100	110	45	35	115	145	69	78	8	13	78	390
LTS-B 7-150	561 471 50	150	160	45	35	115	145	69	78	8	13	78	580
LTS-B 8-120	561 481 20	120	130	50	40	130	170	75	84	9	18	84	760
LTS-B 8-200	561 482 00	200	210	50	40	130	170	75	84	9	18	84	1370

Die RESATEC Gummifederelemente mit festen Winkelsupporten vereinfachen die Montage. Die Gehäuse sind teilweise in gesinterterem Stahl (Grösse 3 + 4) und die grösseren Teile in Alu-Profilen erhältlich. Die Innenvierkante haben jeweils eine durchgehende Zentralbohrung, womit eine stufenlose Befestigung mittels Reibschluss möglich ist.

The RESATEC Rubber Suspension Units with integrated mounting flanges help for easy installation. The outer housing are made of sintered steel (size 3 + 4) the larger sizes from Alu-profiles and the sizes 8 from steel casting. The innersquare is made with a through going bore witch allows a free setting at any position with friction hold.